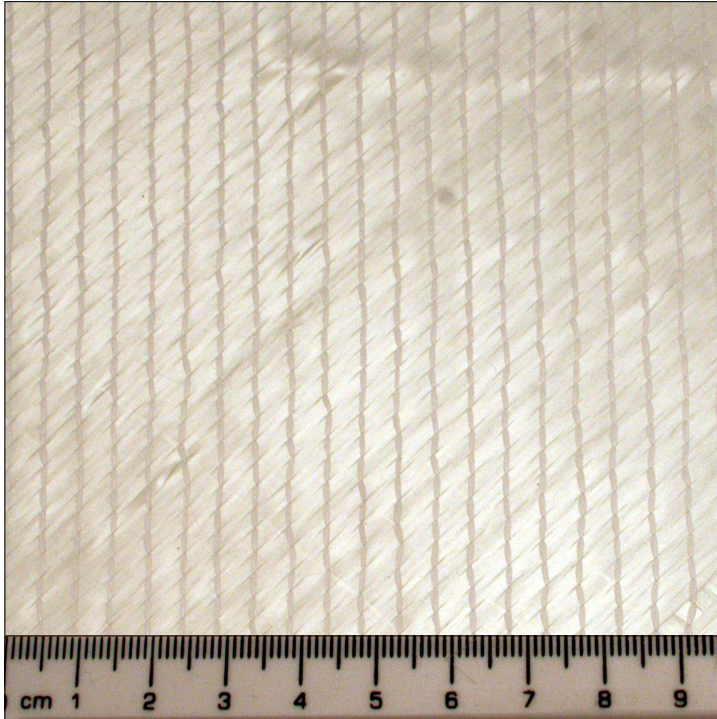


XE304



Fabric Description					
Gurit Style	Unit	Width (mm)	Style	Nominal g/sq.m	Primary Fibre Type
XE304	sq.m	1270	+/- 45 Biaxial	312	E-glass

Fabric Construction											
Stitch no/cm	Length mm	Type	Wt g/m ²	Weight per axis g/m ²				Tex per axis			
				0	90	+45	-45	0	90	+45	-45
2.36	2.5	Pillar	7	1.5	1.5	151	151	68	68	136	136

The policy of Gurit is one of continual development and improvement. Gurit reserves the right to alter specifications and prices without prior notice. Any information or advice obtained from Gurit by other means and whether relating to Gurit material or other materials, is given in good faith. However, it remains the responsibility of the customer to ensure that Gurit materials are suitable for the particular purpose intended.